


# Lesson 10

## DAW 後製系統作業

### DAW & Post-Production Operating

講師：李維國 @  pulse899.com  
garyli@pulse899.com

# DAW後製系統作業

---

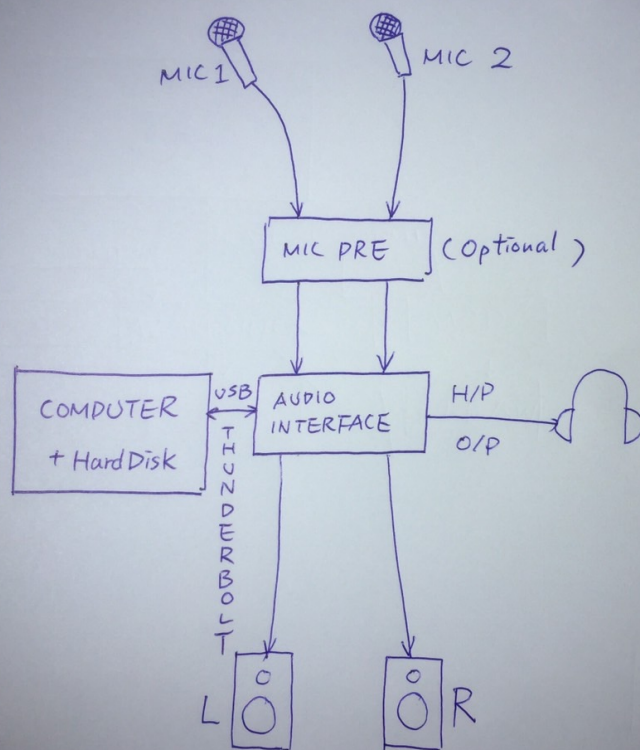
- 須先架設DAW/Digital Audio Workstation
  - 至少熟悉一套後製軟體
  - 以下以Nuendo4為例，實例示範操作
-

# 硬體架設

---

- 有混音器VS無混音器
  - Control Interface
  - Computer
  - Audio Interface 聲音介面
  - 麥克風/麥克風前級和監聽系統
-

# 硬體架設







JUN 23 2013









# 硬體及系統架設說明

---

- 依個人工作需求和使用習慣，選擇使用Mixer、Control Interface或是直接在電腦螢幕上以滑鼠工作。
  - 選擇適合的聲音介面。
  - 可以的話選擇安靜一點的電腦。
  - 選擇喜歡適合的後製程式。
-

# Nuendo後製系統簡介

---



**steinberg**

Creativity First



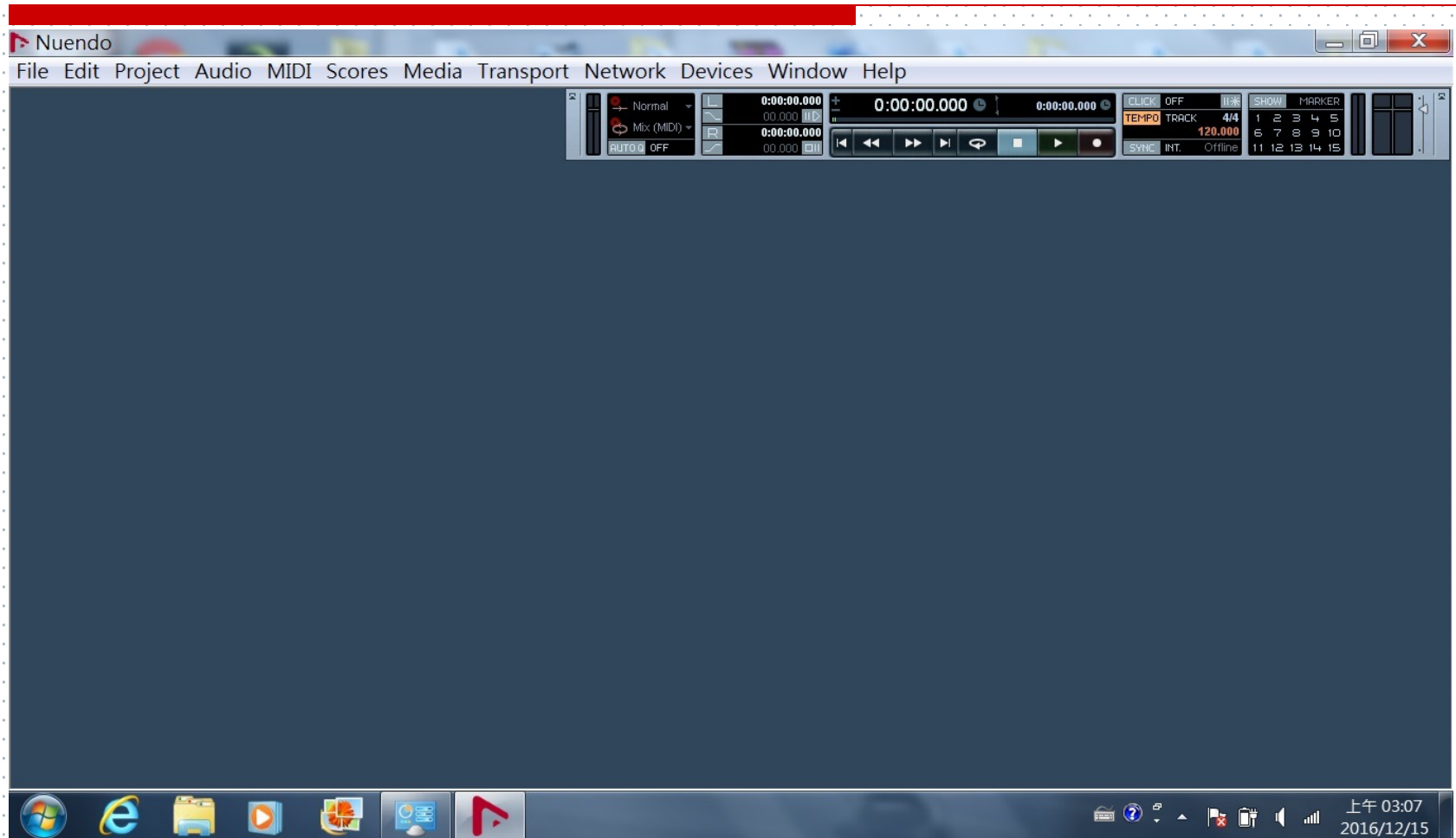
**NUENDO**



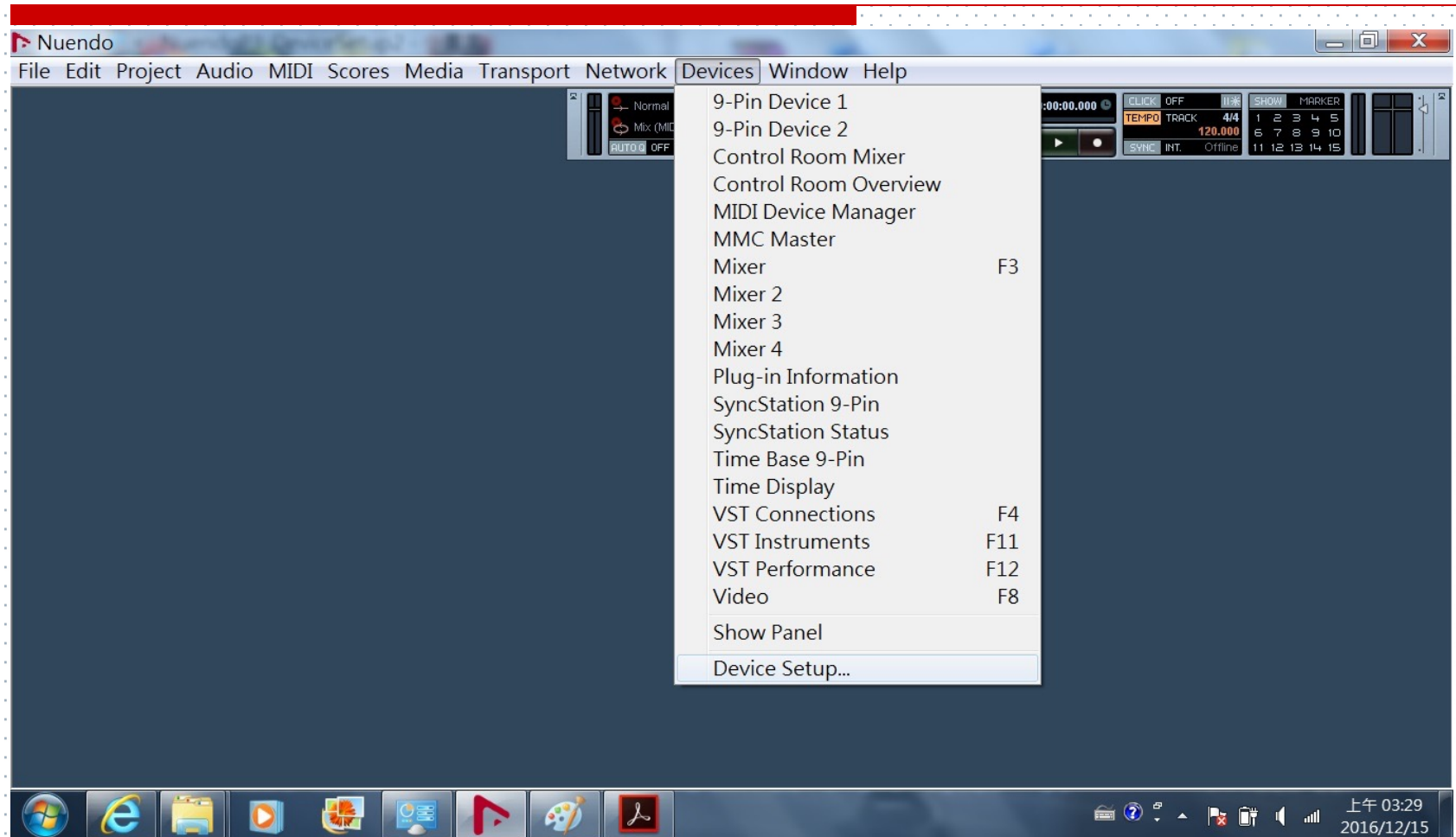
**CUBASE**

---

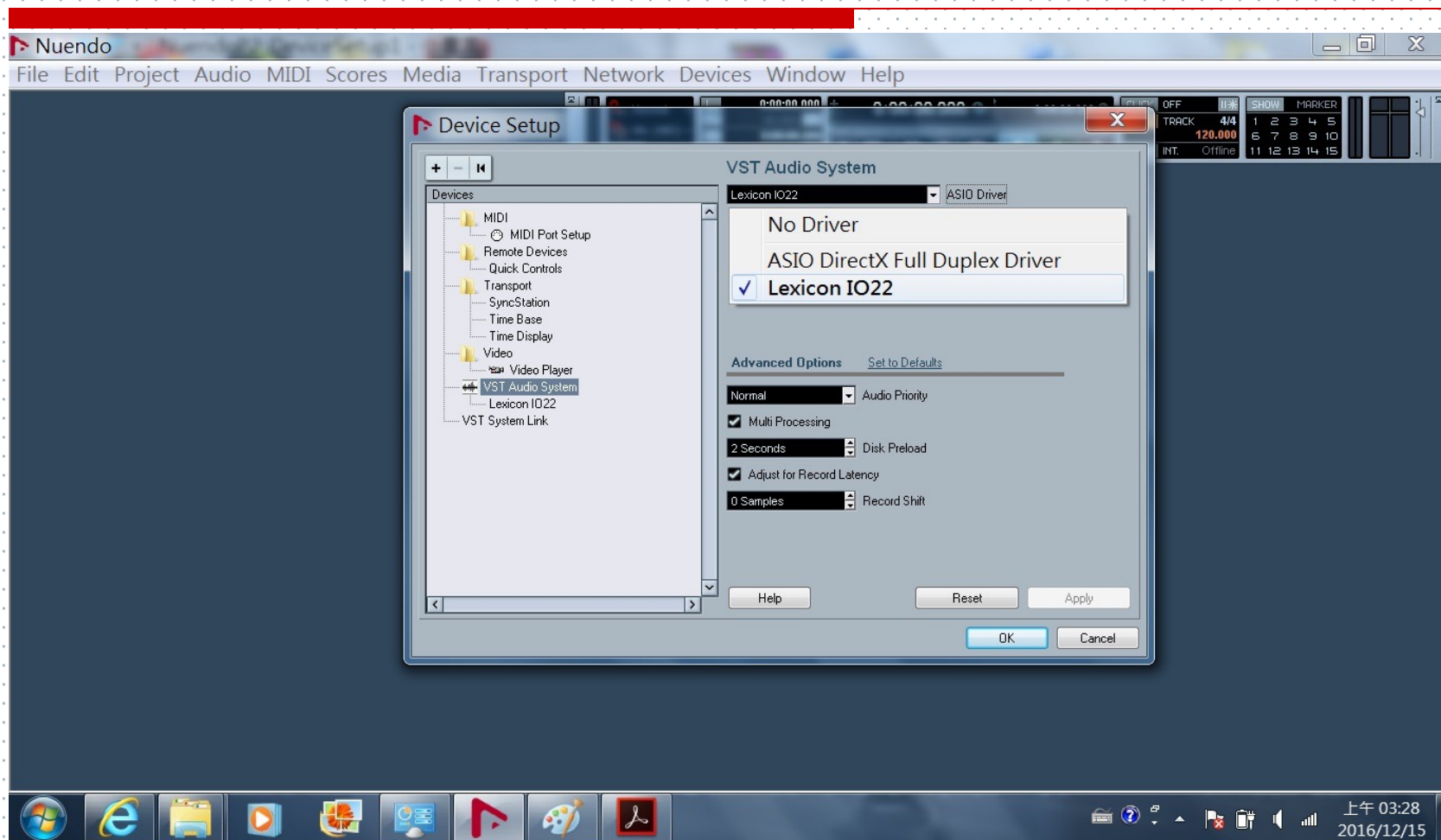
# Nuendo後製系統簡介\_NewProject



# Nuendo後製系統簡介\_硬體裝置設定

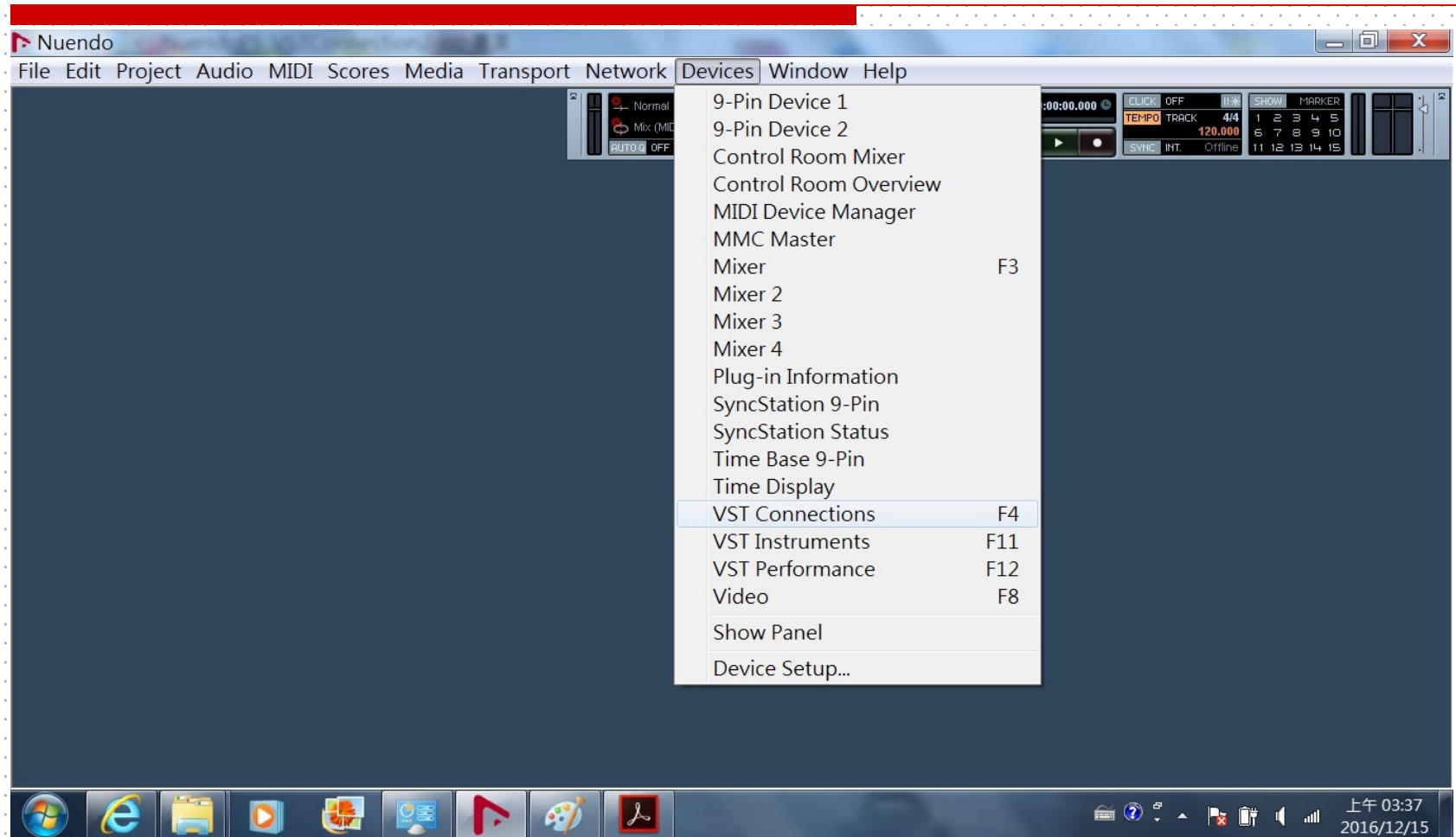


# Nuendo後製系統簡介\_聲音驅動設定





# Nuendo後製系統簡介\_Routing設定



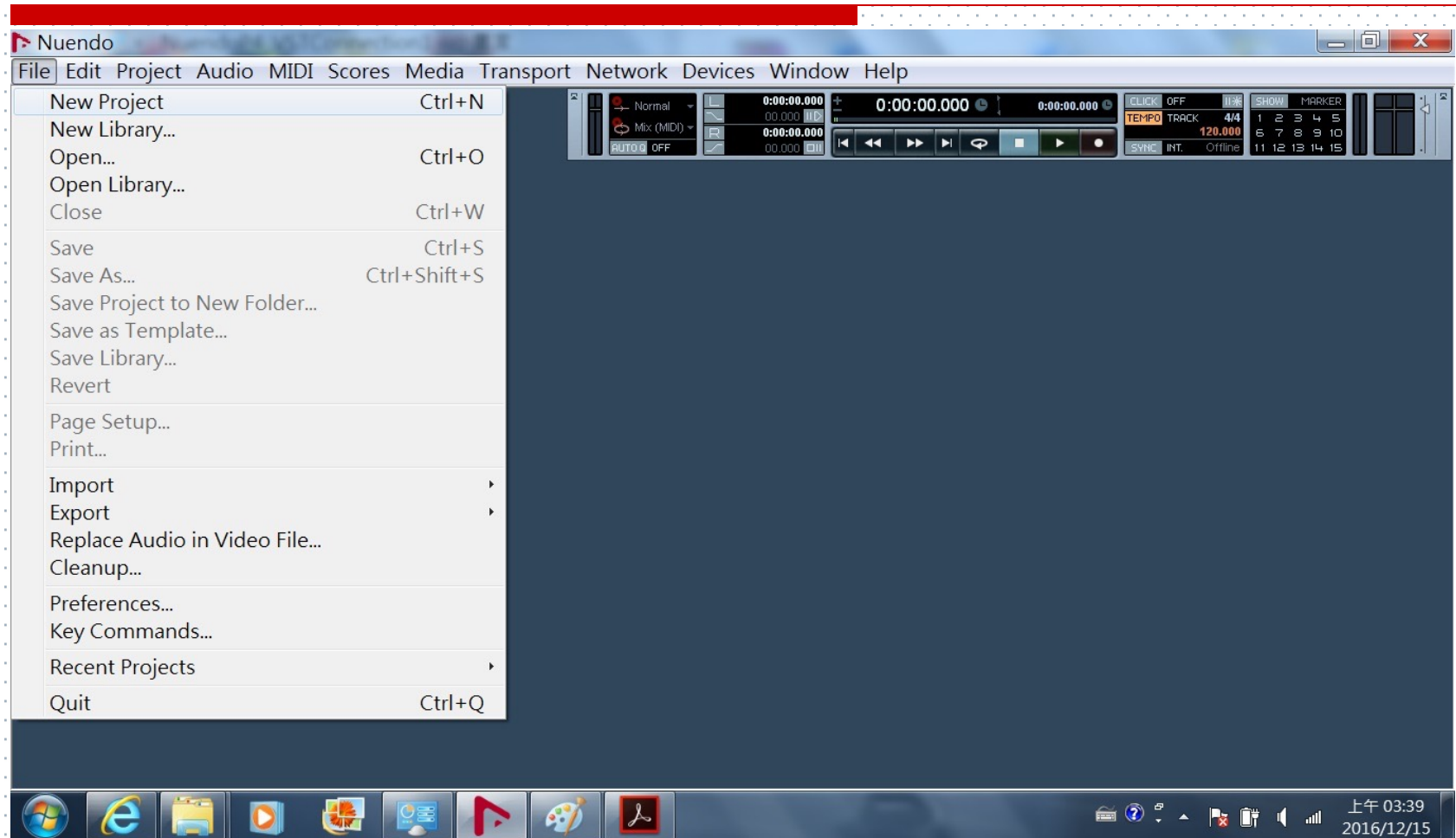
# Nuendo後製系統簡介\_I/O Routing

The screenshot shows the Nuendo software interface with the 'VST Connections - Inputs' window open. The window has tabs for 'Inputs', 'Outputs', 'Group/FX', 'External FX', 'External Instruments', and 'Studio'. The 'Inputs' tab is active, showing a table of input buses. The 'Stereo In' bus is expanded to show 'Left' and 'Right' channels. The 'Right' channel is selected, and the 'Device Port' column shows 'Mic/Line 1' and 'Mic/Line 2'.

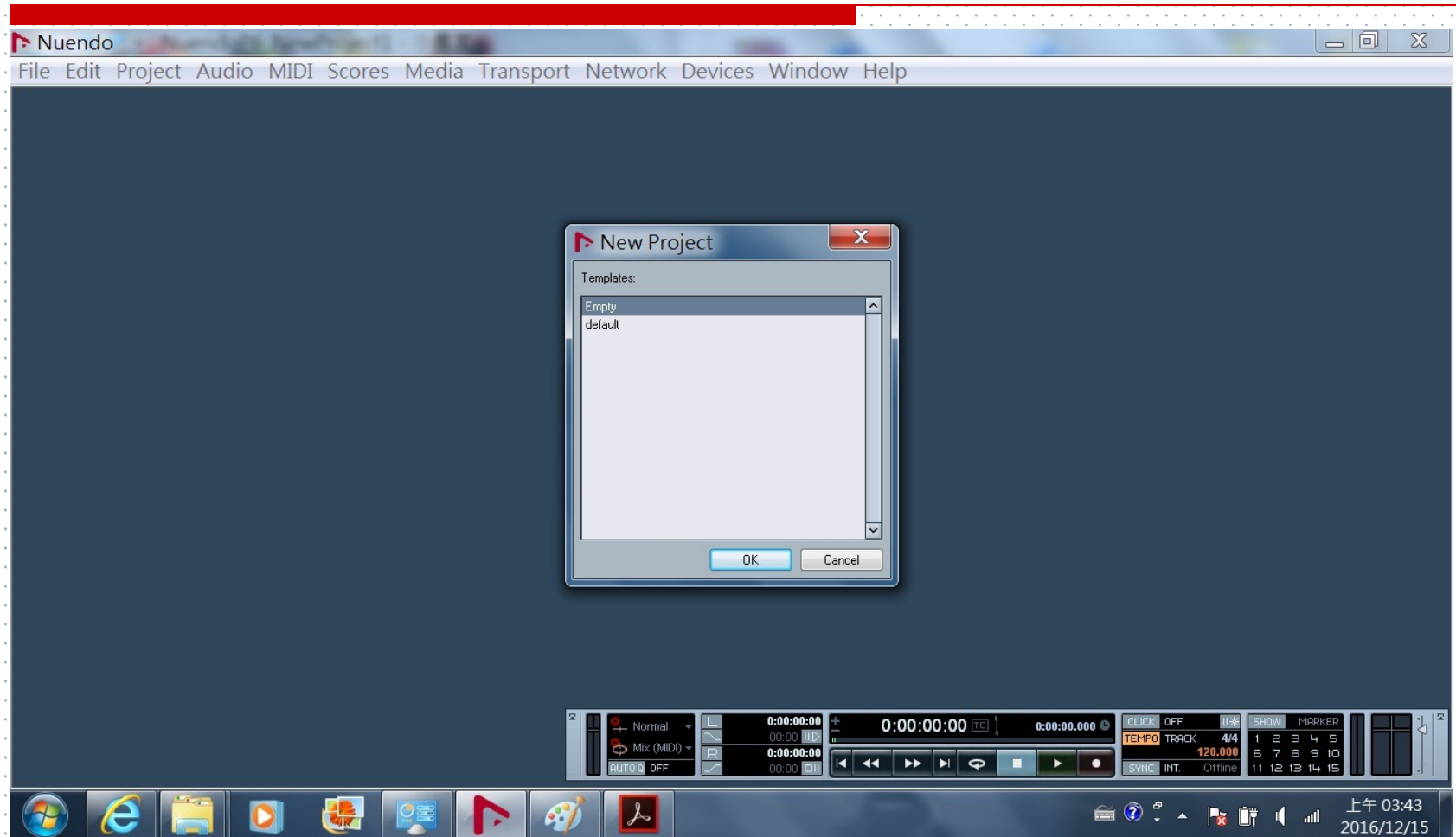
Bus Name	Speakers	Audio Device	Device Port
Stereo In	Stereo	Lexicon I022	
Left			Mic/Line/Inst. 1
Right			Mic/Line 2

The bottom of the screenshot shows the Windows taskbar with various application icons and the system tray displaying the time '上午 03:36' and date '2016/12/15'.

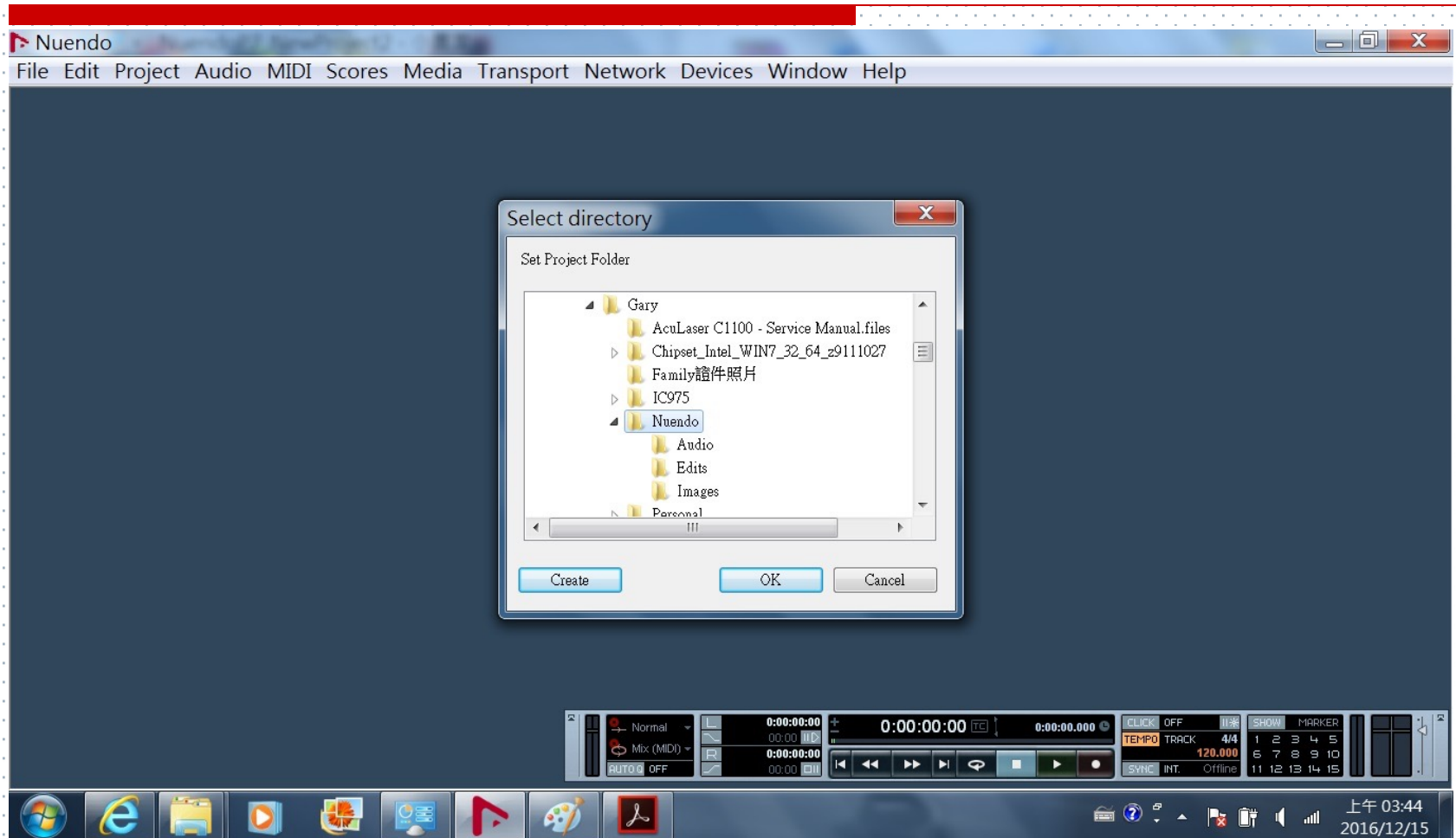
# Nuendo後製系統簡介\_開Project



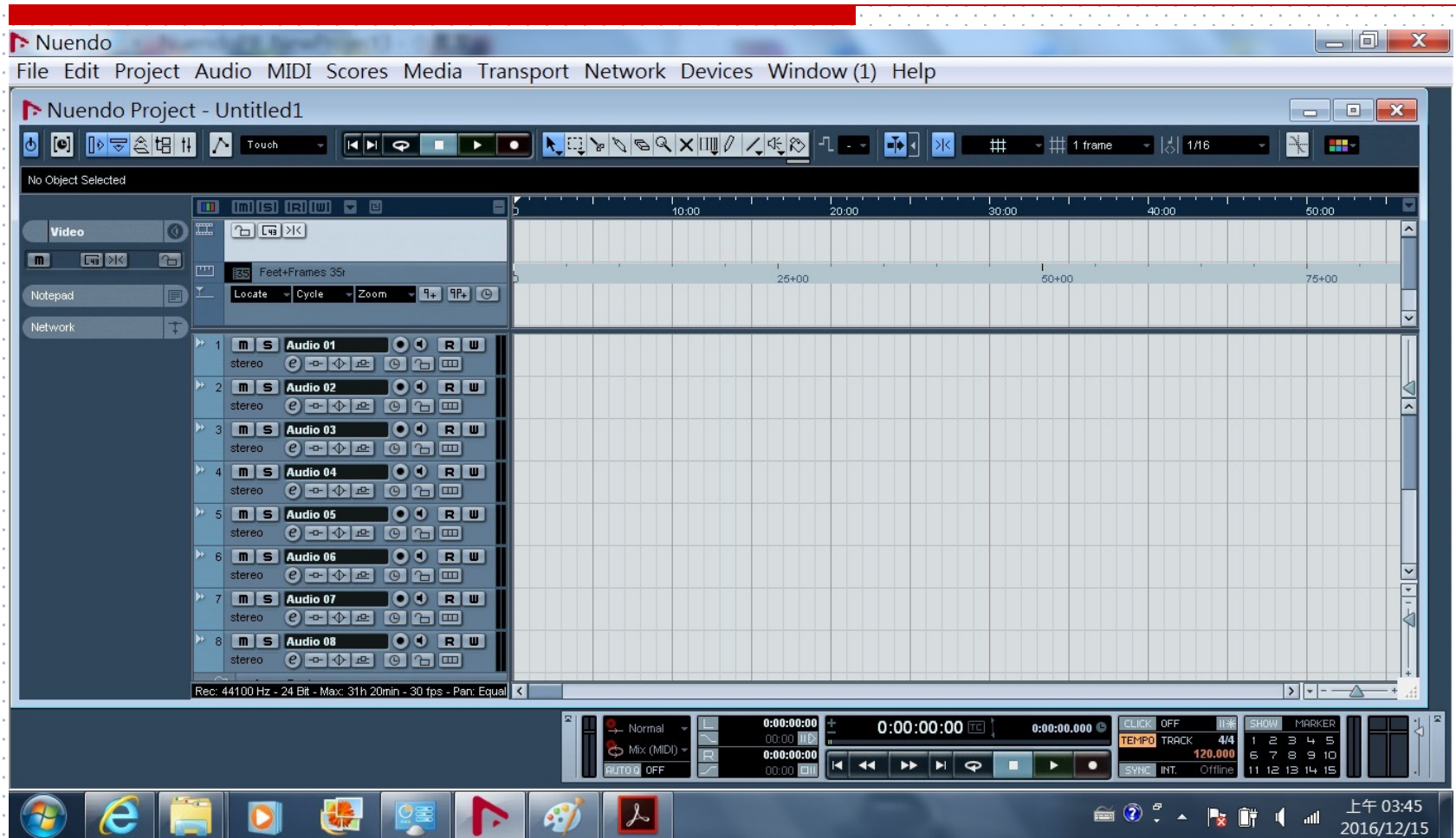
# Nuendo後製系統簡介\_NewProject



# Nuendo後製系統簡介\_選擇檔案存取路徑

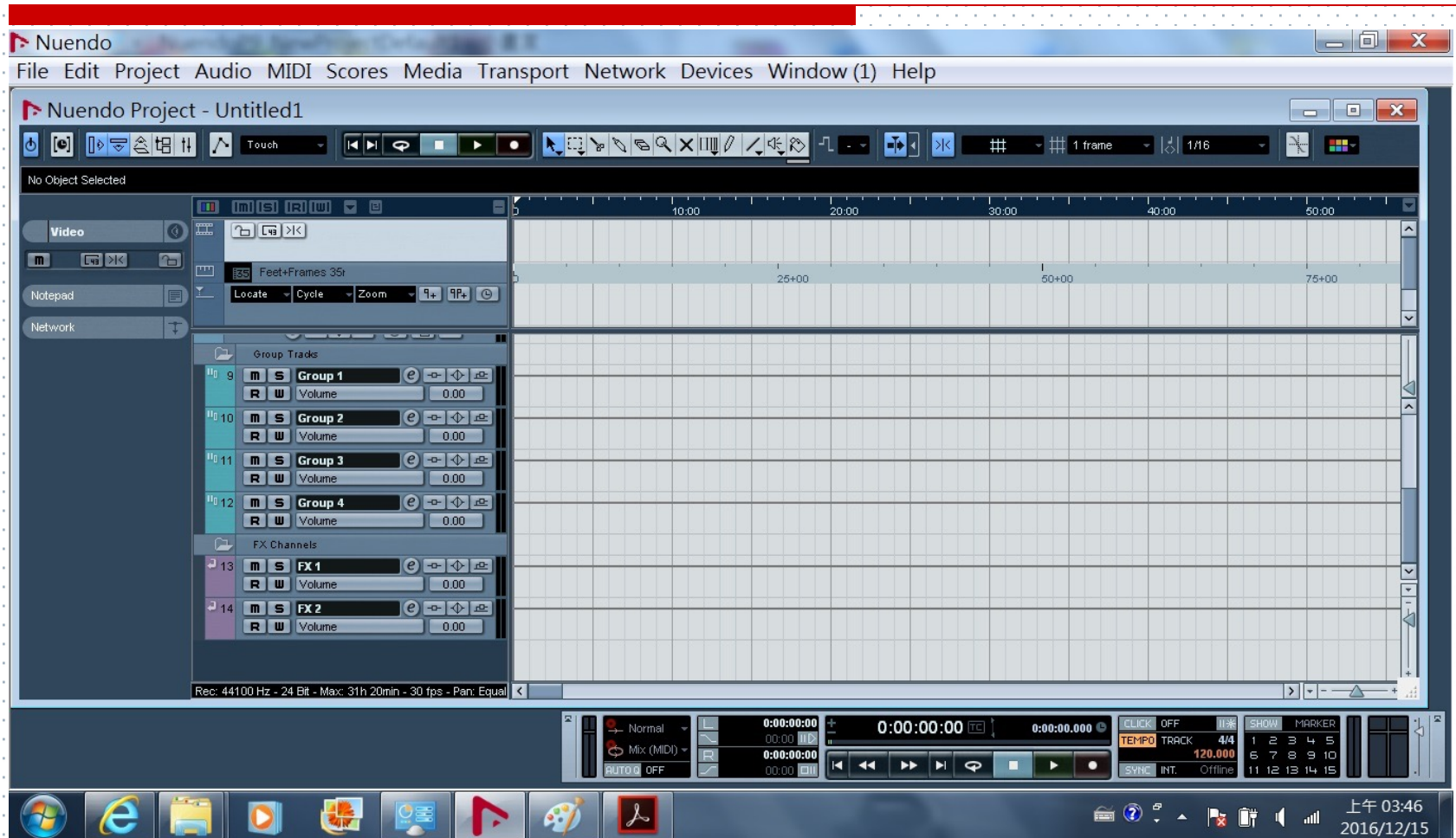


# Nuendo後製系統簡介\_預設Project

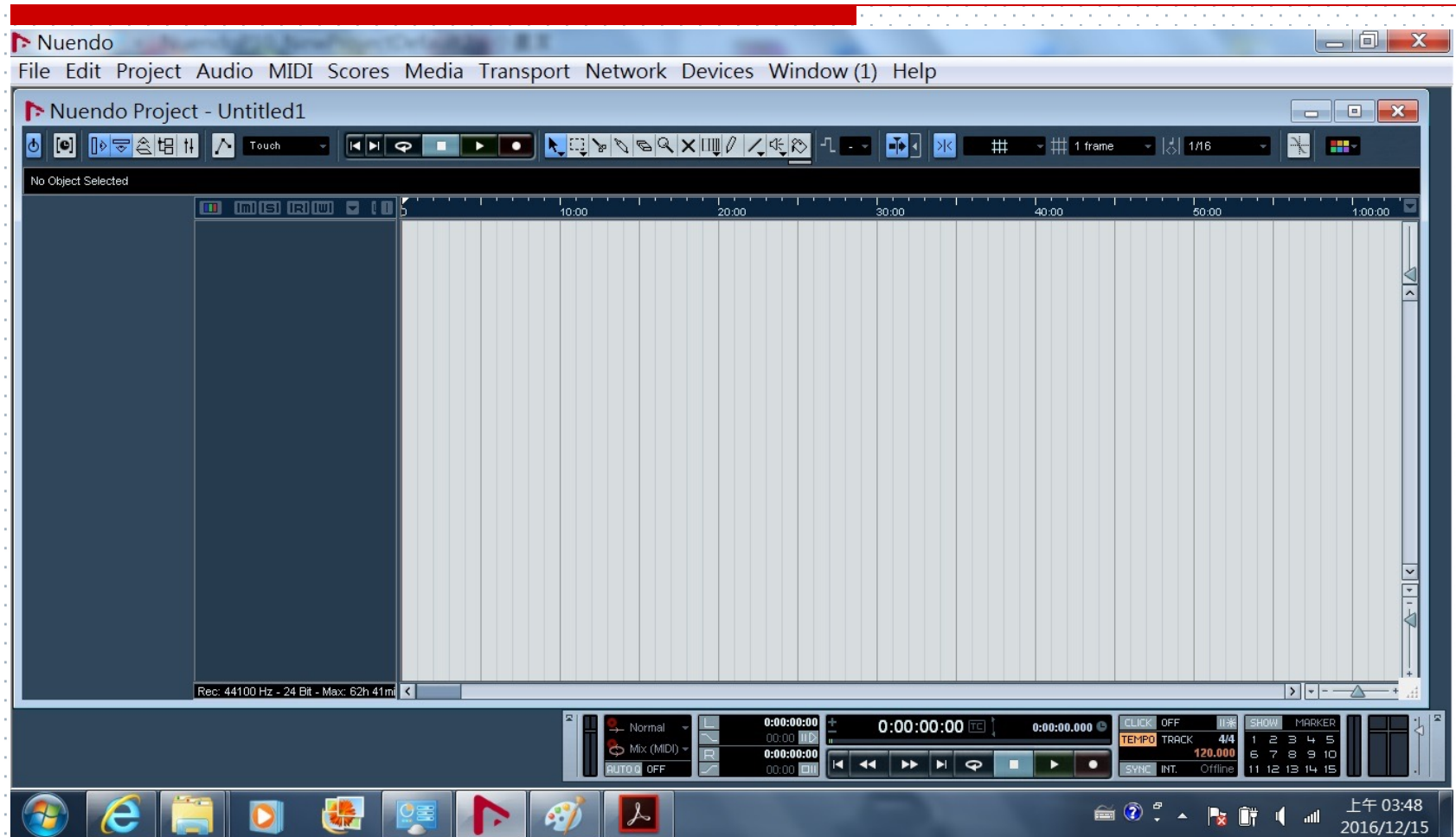




# Nuendo後製系統簡介\_預設Project

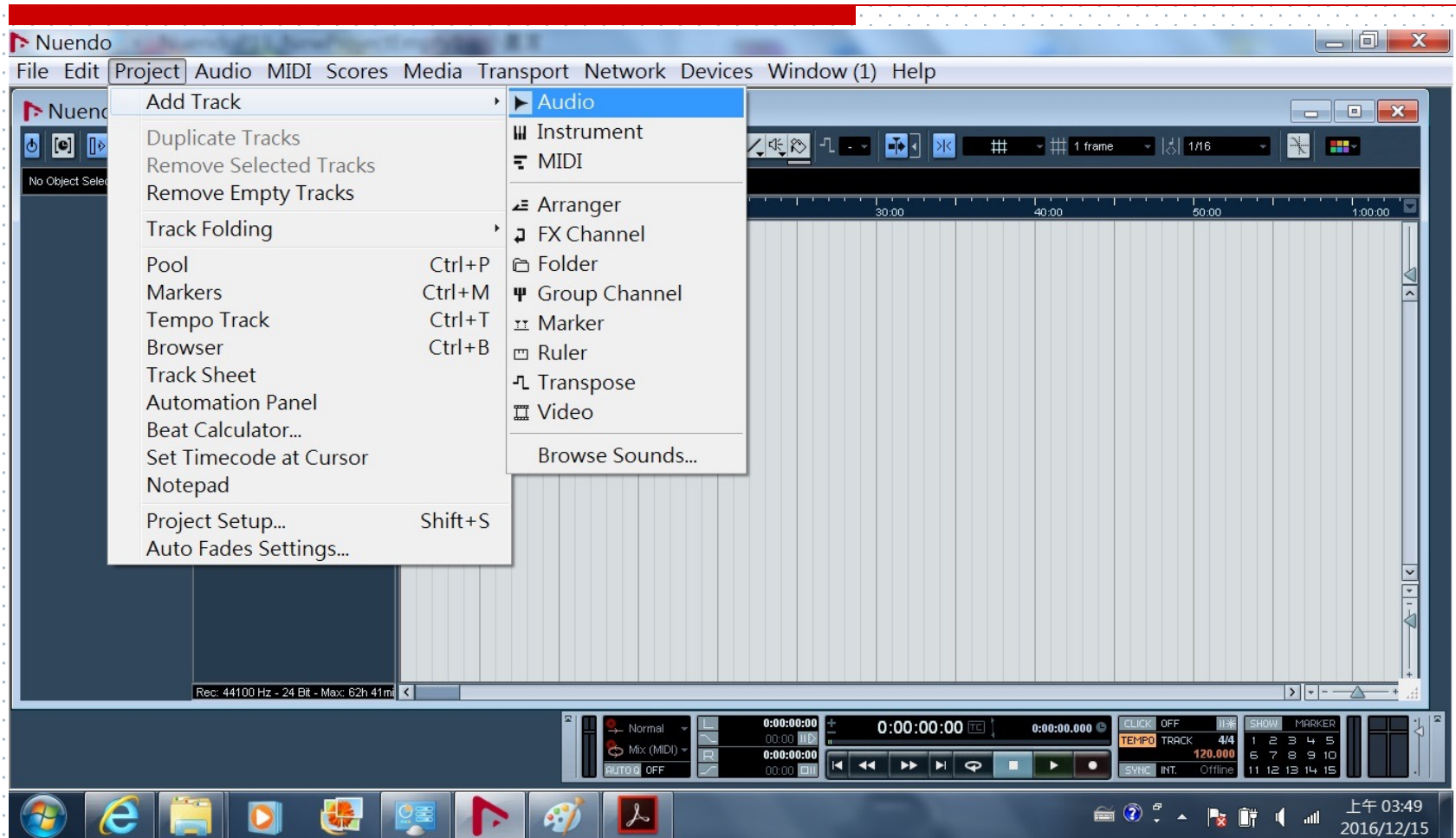


# Nuendo後製系統簡介\_空白Project

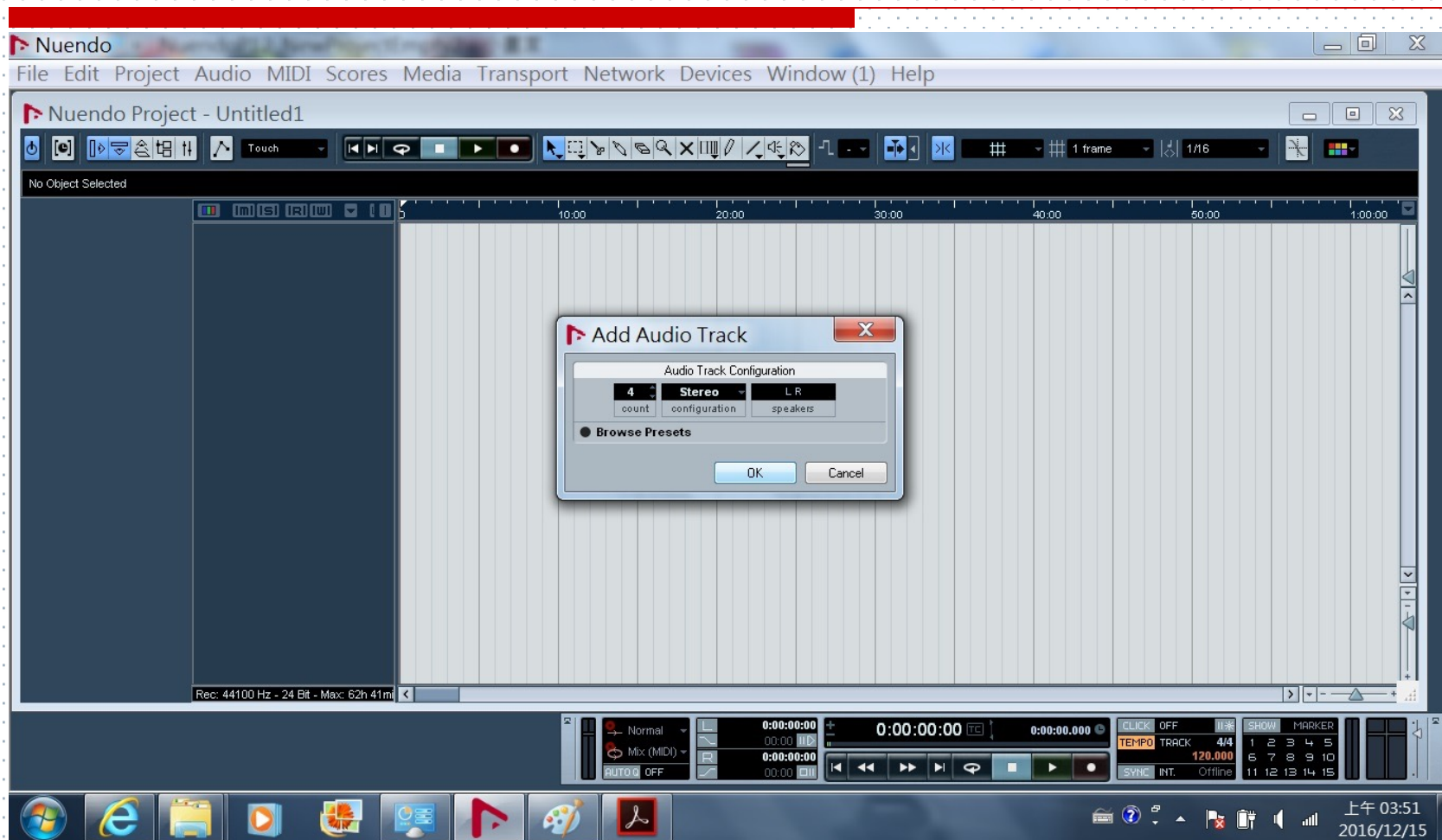




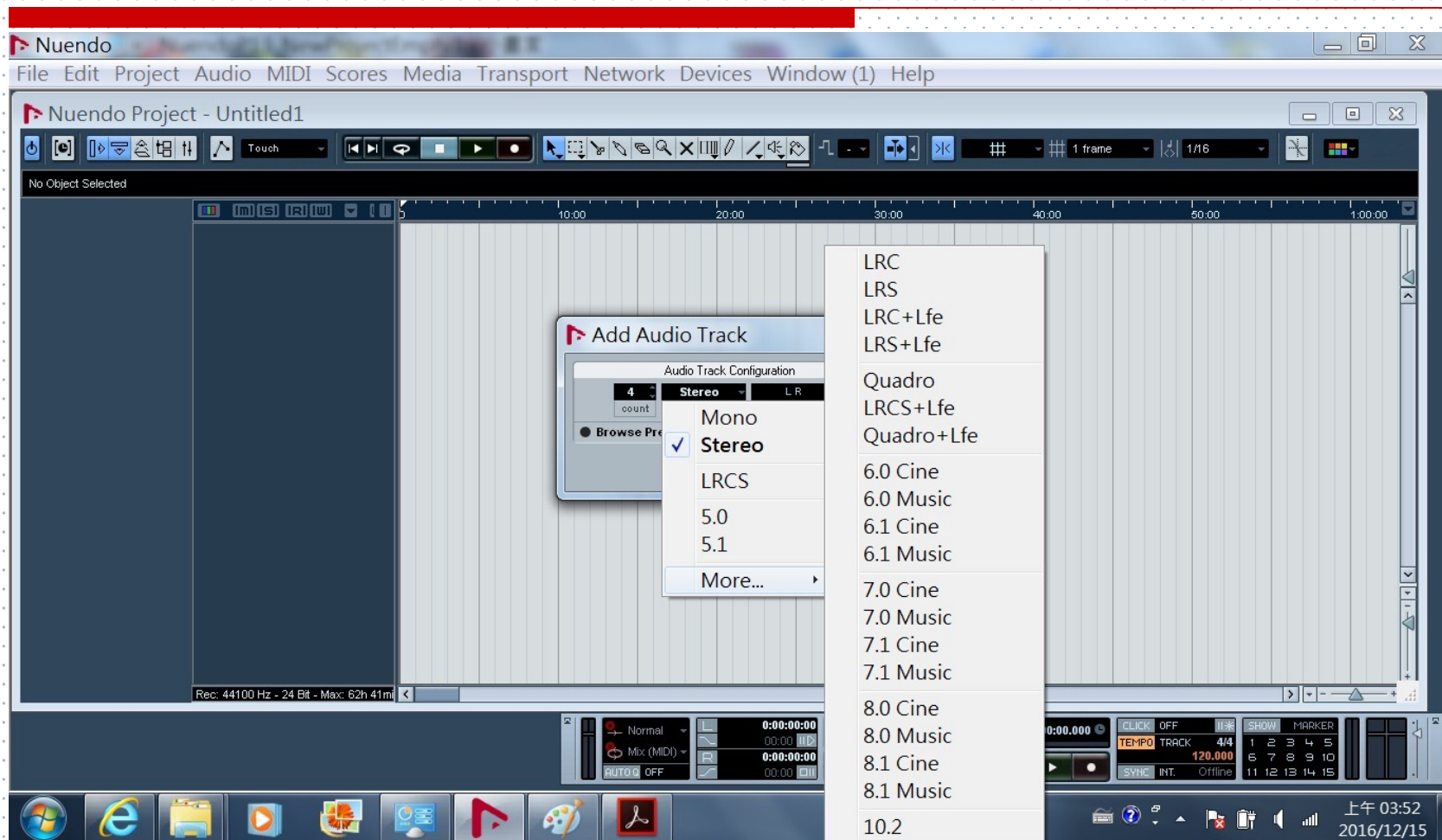
# Nuendo後製系統簡介\_增加音軌



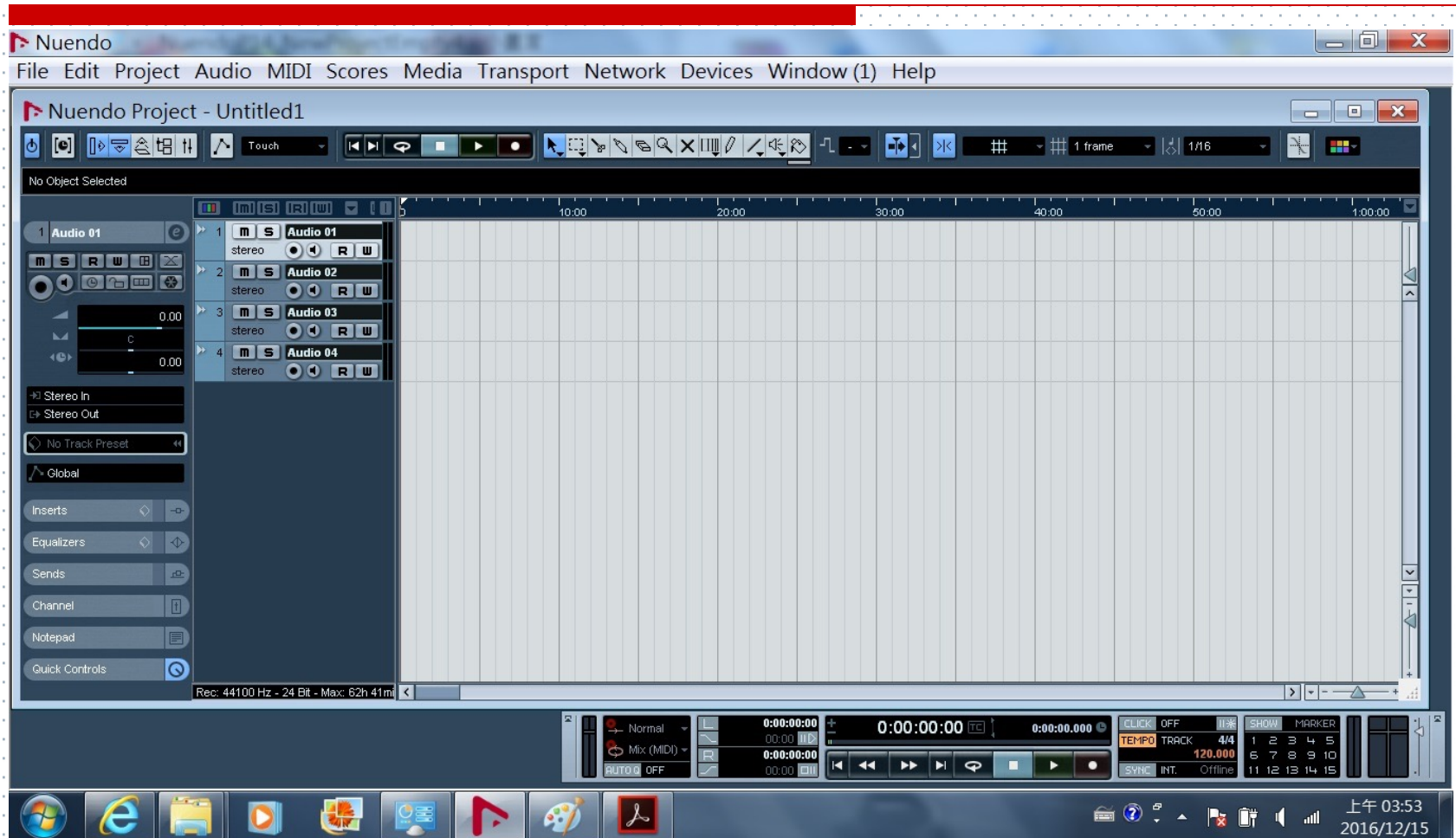
# Nuendo後製系統簡介\_增加音軌



# Nuendo後製系統簡介\_音軌類行選擇

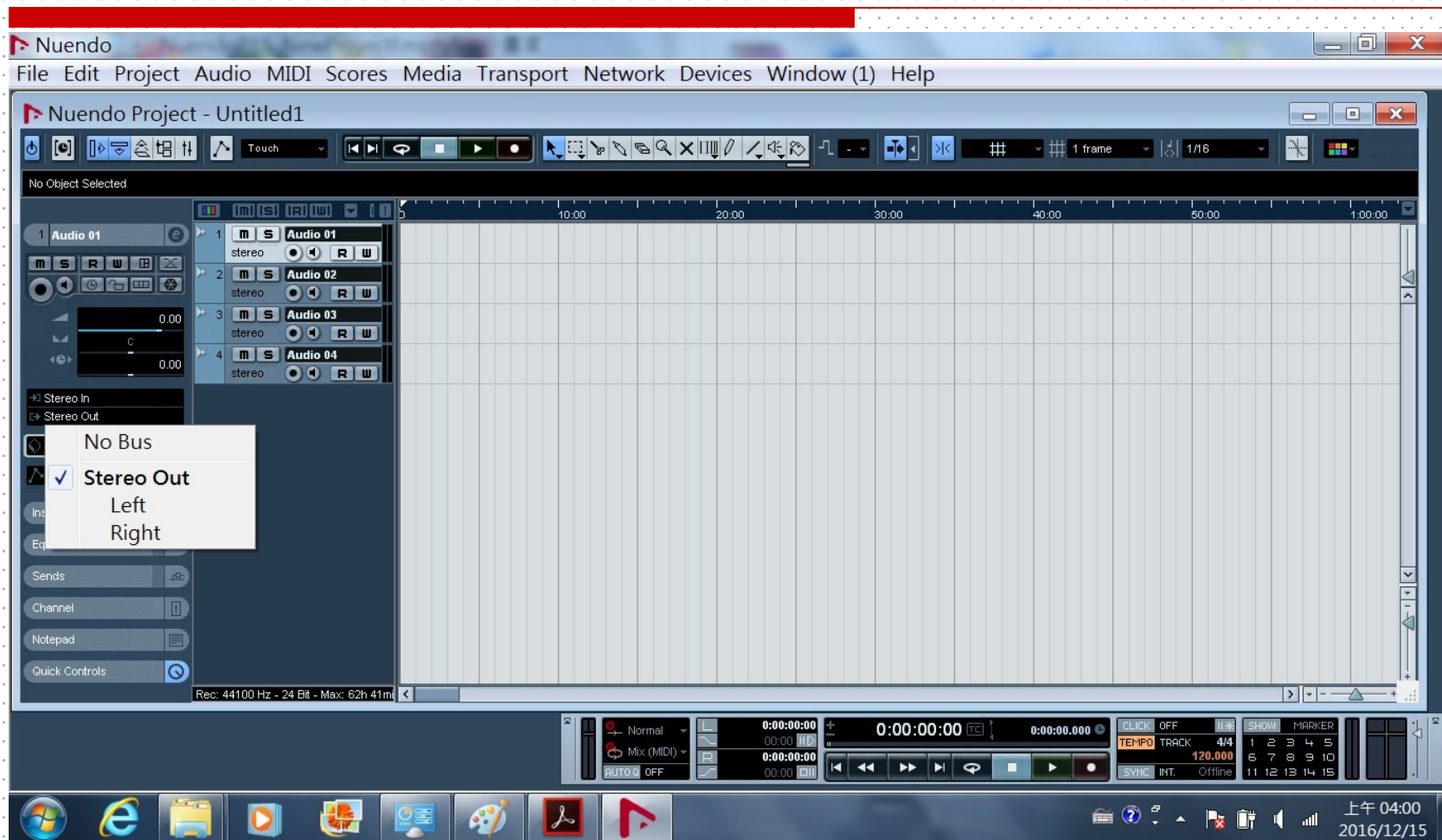


# Nuendo後製系統簡介\_音軌加好了

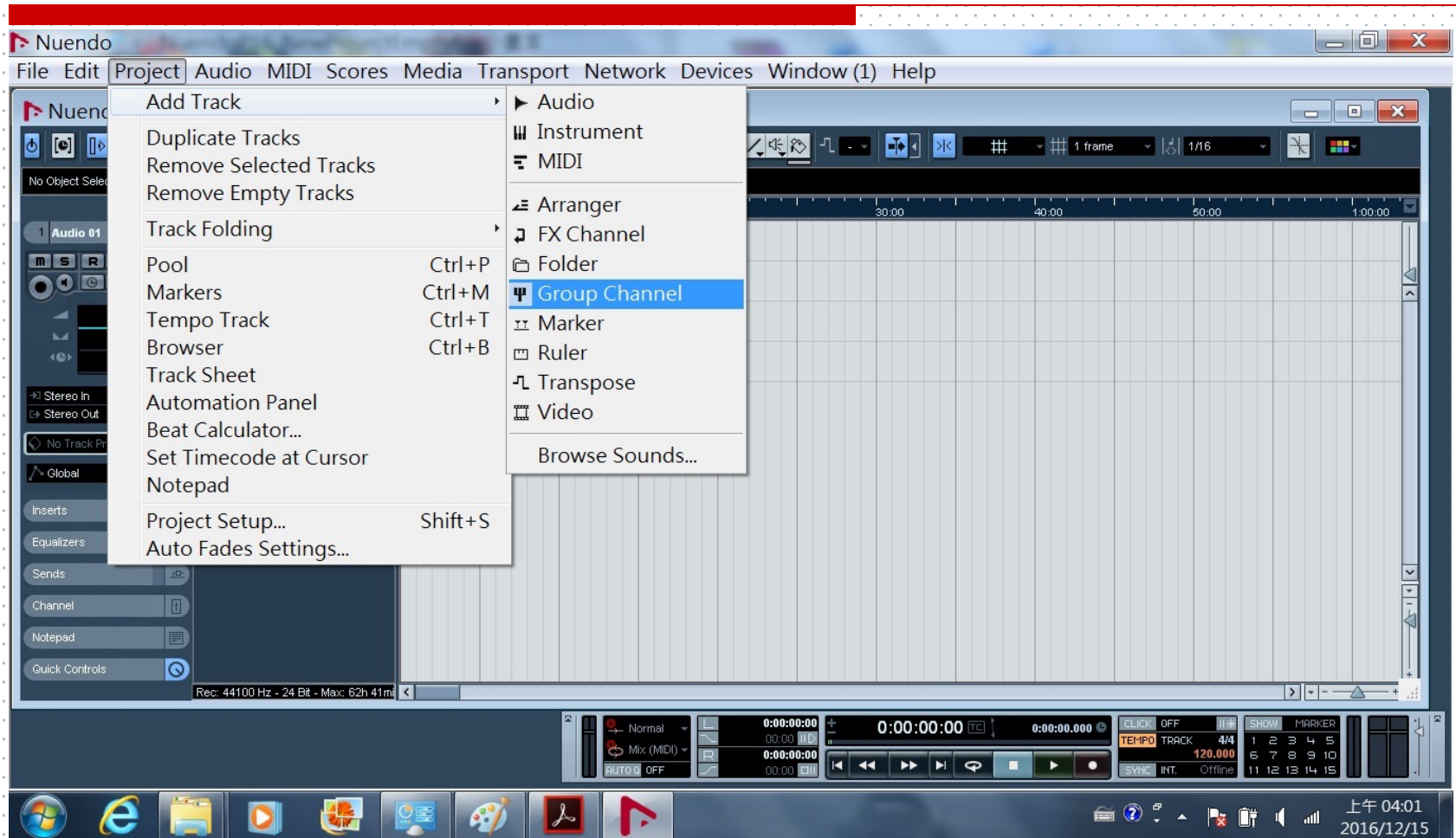




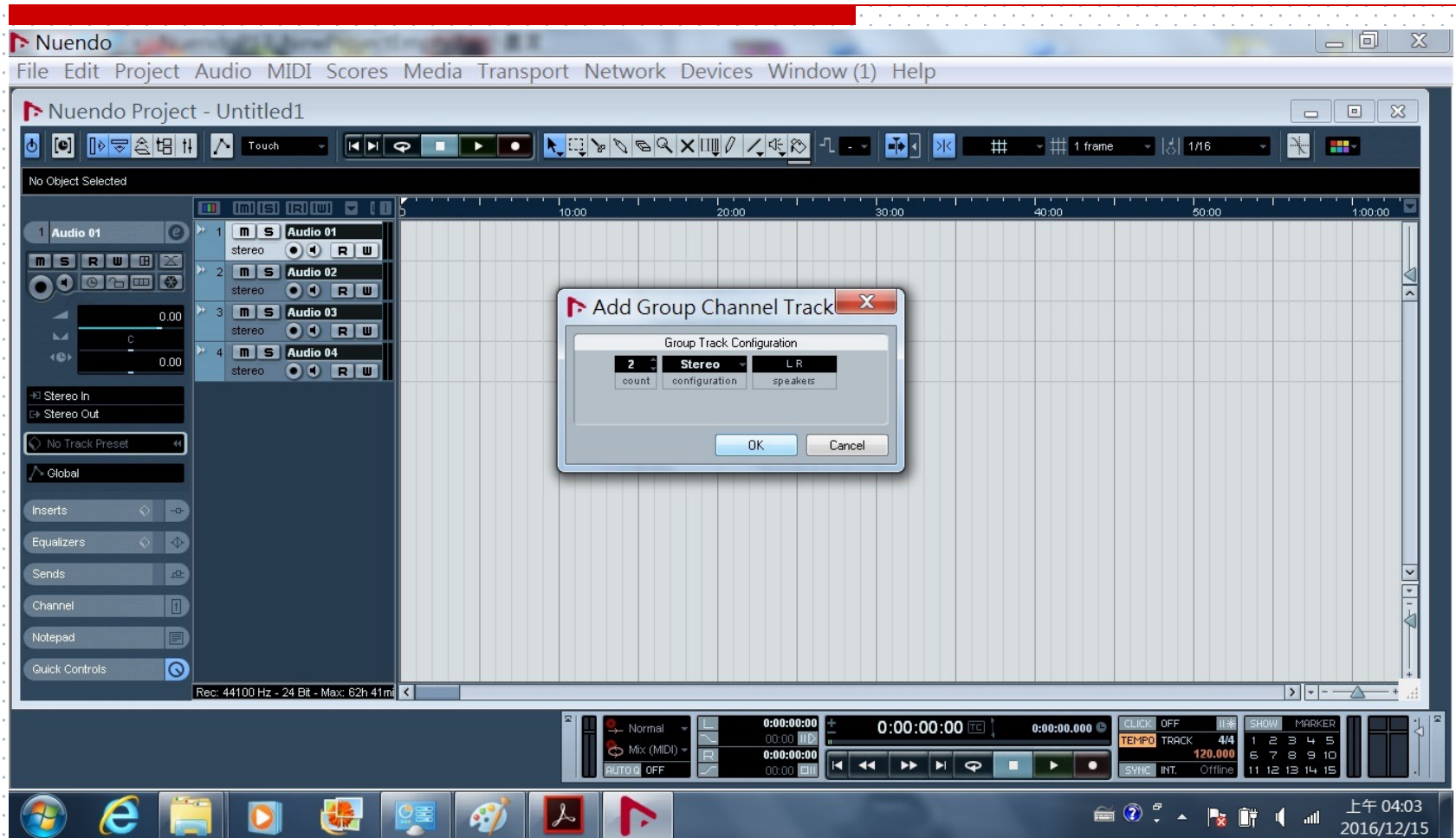
# Nuendo後製系統簡介\_音軌I/O設定



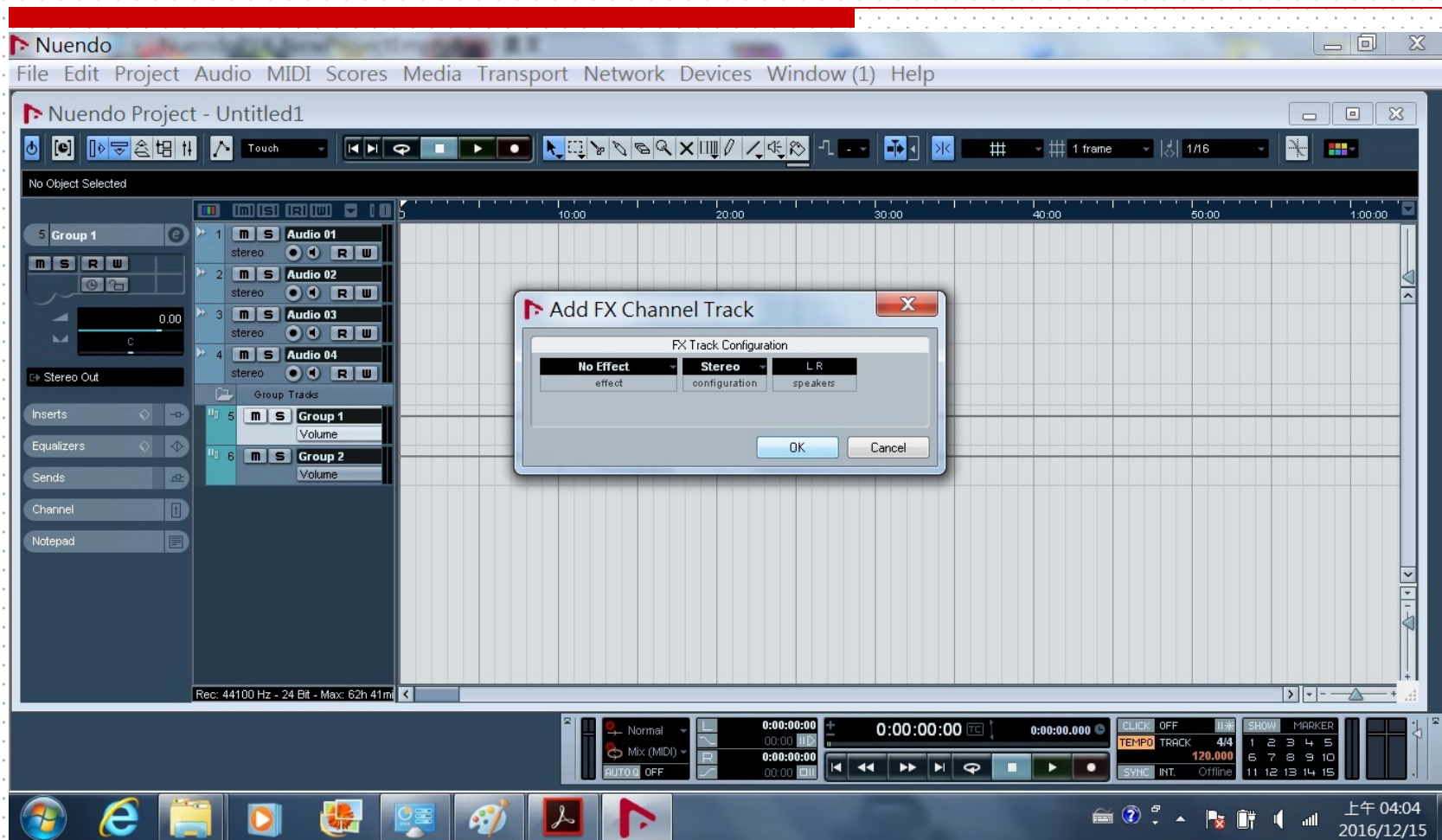
# Nuendo後製系統簡介\_增加Group軌



# Nuendo後製系統簡介\_增加Group軌



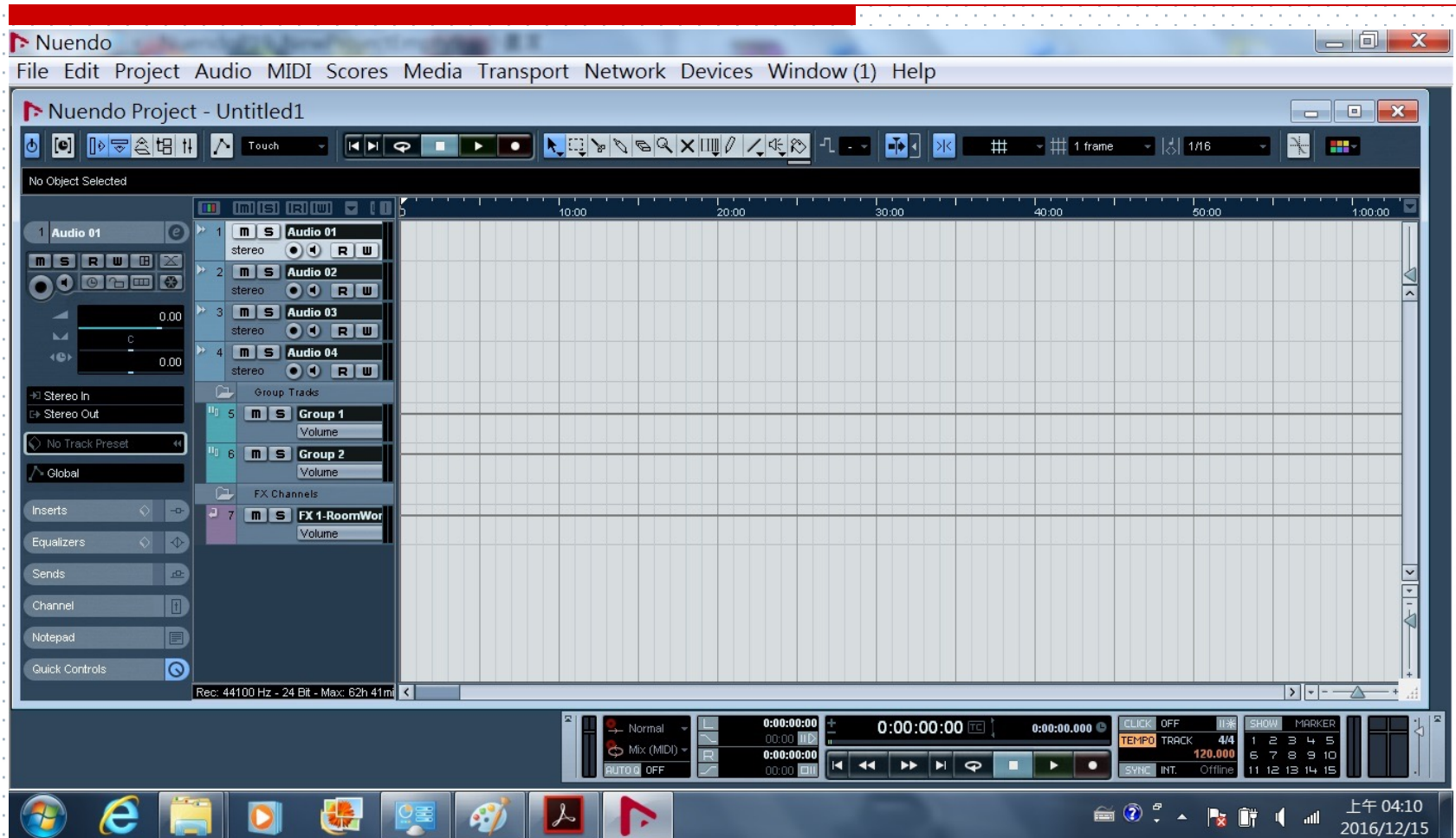
# Nuendo後製系統簡介\_增加效果器軌



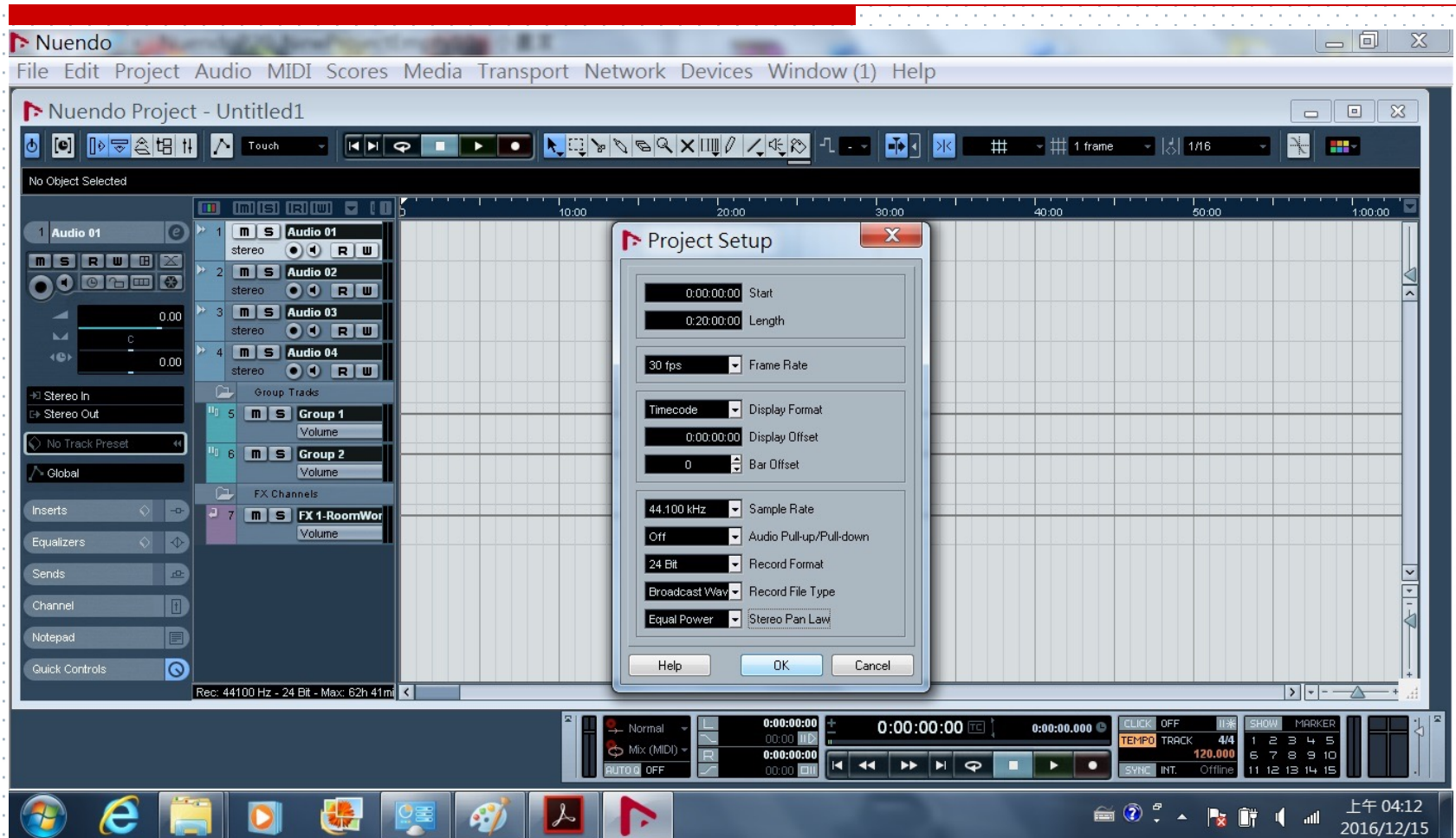


# Nuendo後製系統簡介\_

## Group和效果器軌都加好了

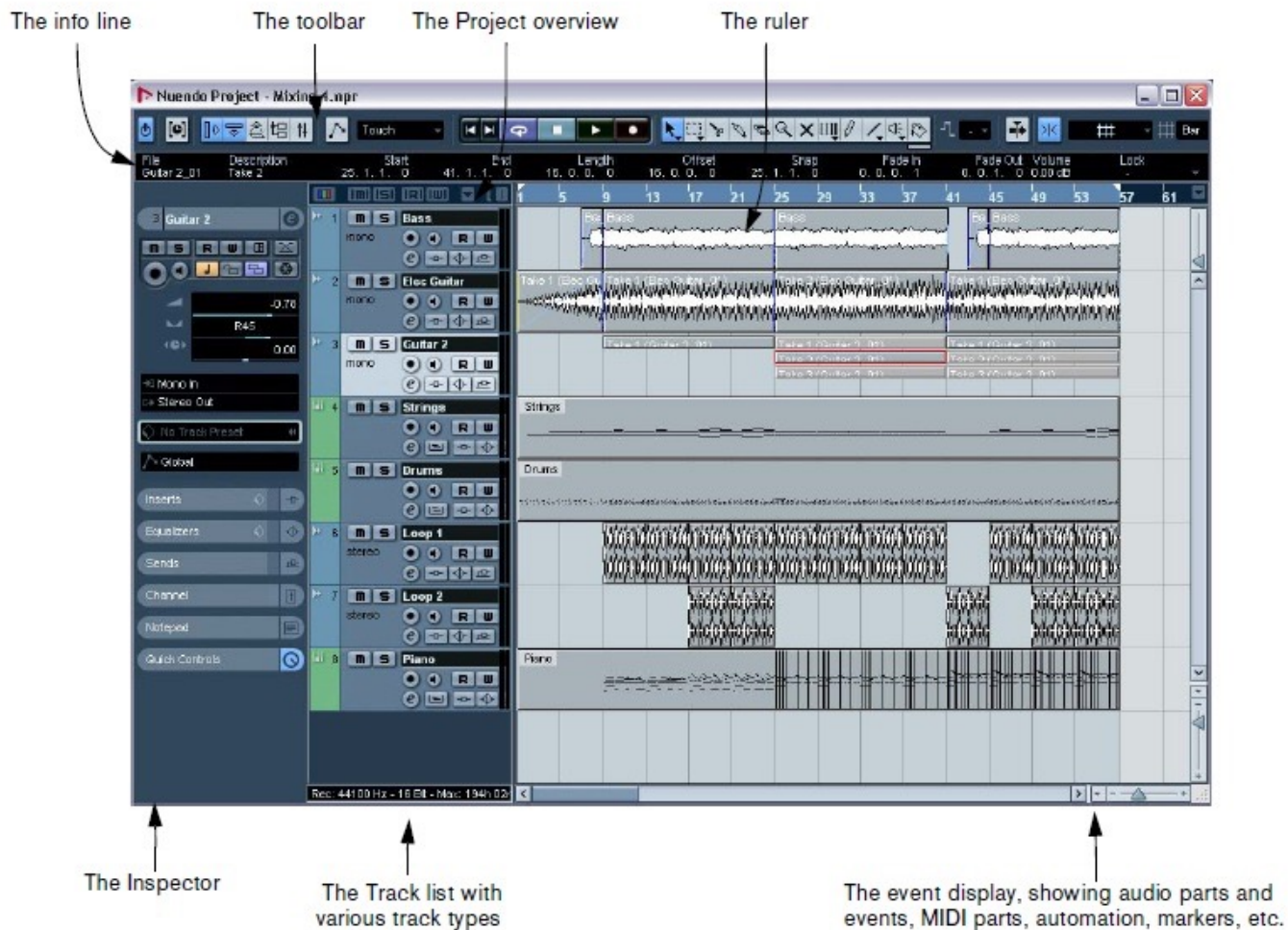


# Nuendo後製系統簡介\_Project設定

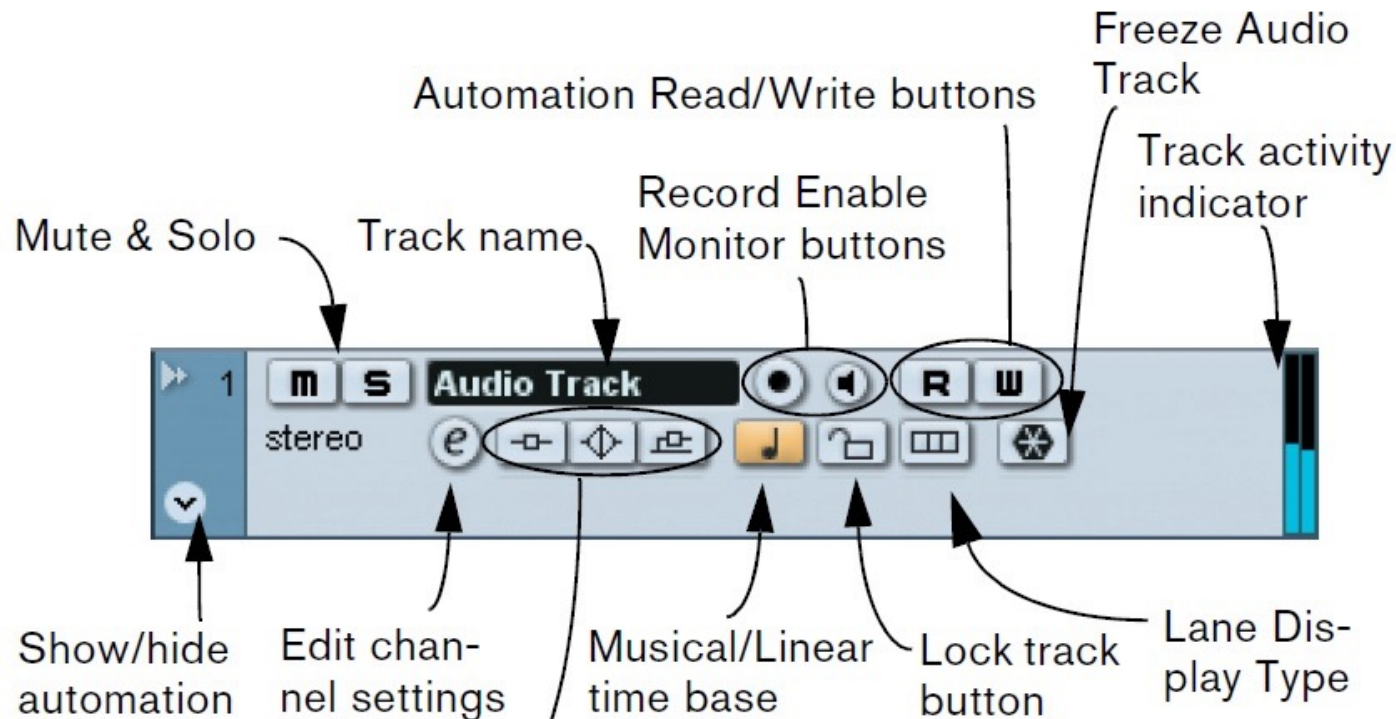


# Nuendo後製系統簡介\_Project Window

## Window Overview



# Nuendo後製系統簡介\_Track List



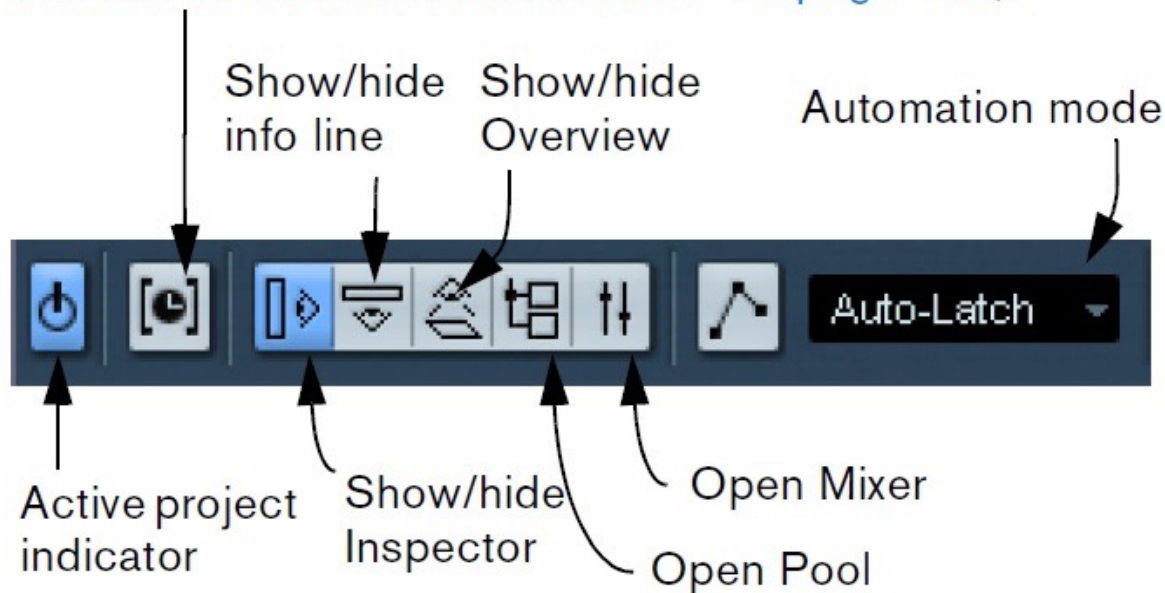
Indicates whether effect sends, EQ or insert effects are activated for the track. Click to bypass.



# Nuendo後製系統簡介\_Toolbar

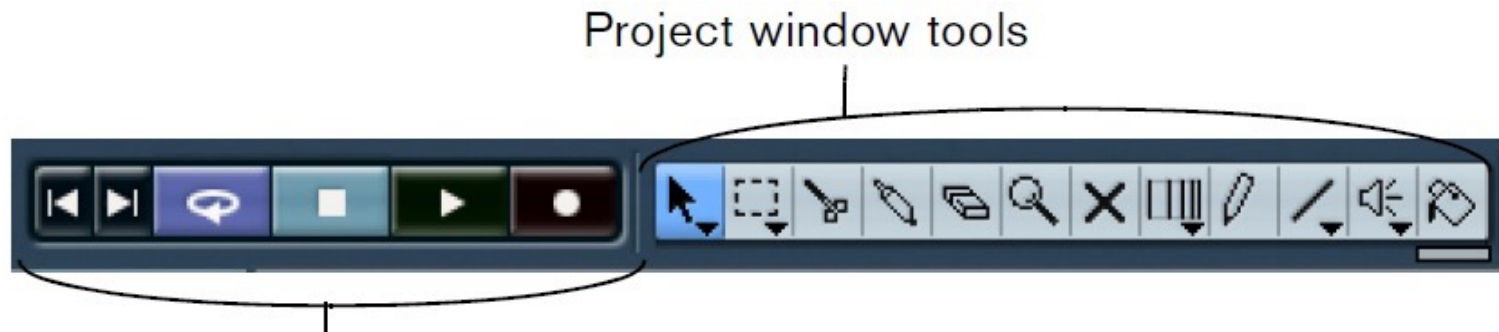
---

Constrain delay compensation (see the chapter “VST Instruments and Instrument tracks” on page 189).



# Nuendo後製系統簡介\_Toolbar

---

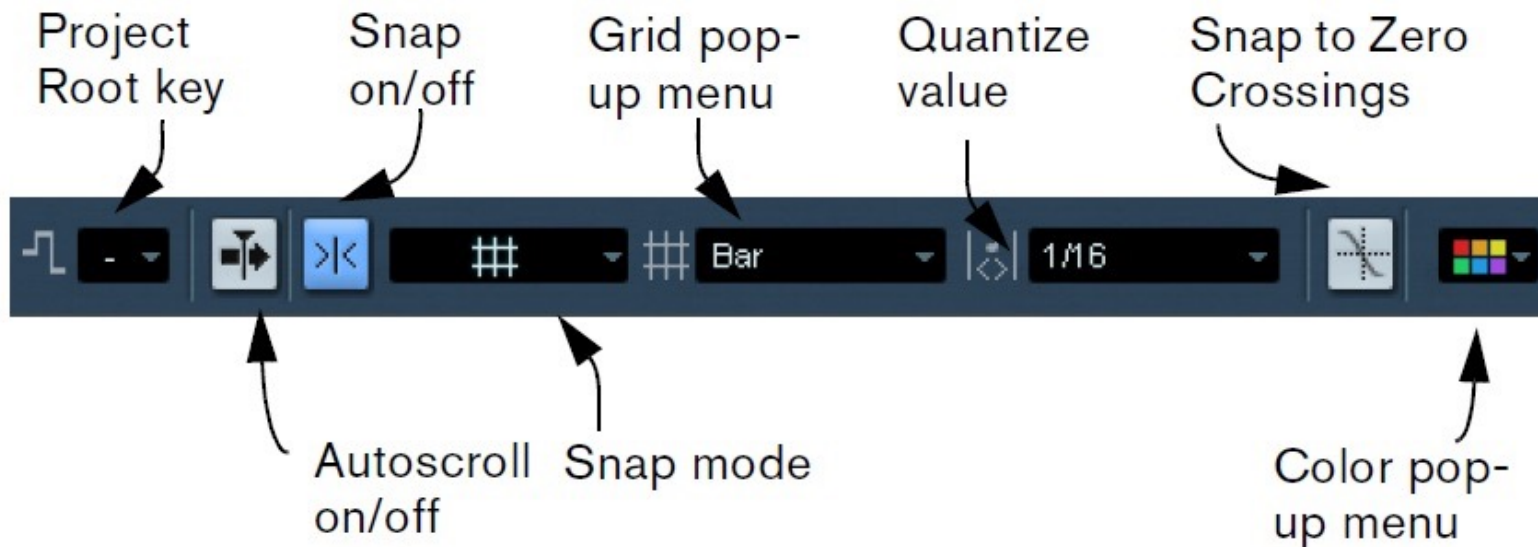


Transport controls

(Previous/Next Marker, Cycle, Stop, Play, and Record)

# Nuendo後製系統簡介\_Toolbar

---



# Nuendo後製系統簡介\_Section

## Sections



Parameter	Description
Delay	This adjusts the playback timing of the audio track. Positive values delay the playback while negative values cause the track to play earlier. The values are set in milliseconds.
Input Routing	This lets you specify which Input bus or MIDI input the track should use (see <a href="#">“Setting up busses”</a> on <a href="#">page 11</a> for information about Input busses).
Output Routing	Here you decide to which output the track should be routed. For audio tracks you select an output bus (see <a href="#">“Setting up busses”</a> on <a href="#">page 11</a> ) or Group channel, for MIDI tracks you select a MIDI output.
Inserts section	Allows you to add insert effects to the track, see the chapter <a href="#">“Audio effects”</a> on <a href="#">page 168</a> . The Edit button at the top of the section opens the control panels for the added insert effects.
Equalizers section	Lets you adjust the EQs for the track. You can have up to four bands of EQ for each track, see <a href="#">“Making EQ settings”</a> on <a href="#">page 138</a> . The Edit button at the top of the section opens the Channel Settings window for the track.



# Nuendo後製系統簡介\_Section

## Sections



**Auto Fades Settings button**

Opens a dialog in which you can make separate Auto Fade settings for the track. See [“Making Auto Fade settings for a separate track”](#) on page 97.

**Edit Channel settings**

Opens the Channel Settings window for the track, allowing you to view and adjust effect and EQ settings, etc. See [“Using Channel Settings”](#) on page 137.

**Volume**

Use this to adjust the level for the track. Changing this setting will move the track's fader in the mixer window, and vice versa. See [“Setting volume in the mixer”](#) on page 132 to learn more about setting levels.

**Pan**

Use this to adjust the panning of the track. As with the Volume setting, this corresponds to the Pan setting in the mixer.

# Nuendo後製系統簡介\_Section

## Sections



- Equalizer Curve section** Lets you adjust the EQs for the track graphically, by clicking and dragging points in a curve display.
- Sends section** Allows you to route an audio track to one or several FX channels (up to eight), see the chapter [“Audio effects”](#) on [page 168](#). For MIDI tracks, this is where you assign MIDI send effects. The Edit button at the top of the section opens the control panel for the first effect in each FX channel.
- Studio Sends** The Studio Sends are used to route cue mixes to Control Room Studios. For a detailed description of Studios and Studio Sends, see the chapter [“Control Room”](#) on [page 151](#).
- Surround Pan** When the Surround Panner is used for a track, this is also available in the Inspector. For further information, see [“Using the Surround Panner”](#) on [page 208](#).
- Channel section** Shows a duplicate of the corresponding mixer channel strip. The channel overview strip to the left lets you activate and deactivate insert effects, EQs and sends.

# Nuendo後製系統簡介\_Section

## Sections



**Notepad section** This is a standard text notepad, allowing you to jot down notes about the track.

If you have entered any notes about a track, the icon next to the “Notepad” heading will light up to indicate this. Moving the pointer over the icon will display the Notepad text in a tool tip.

**Network section**

This contains controls related to the Network functions of the program. For further information, see the separate PDF document “Networking”.

**User Panel**

Here you can display device panels, e.g. for external MIDI devices, audio track panels or VST insert effect panels. For information on how to create or import MIDI device setups, see the separate PDF document “MIDI Devices”.

**Quick Controls**

Here you can configure quick controls, e.g. to use remote devices. See the chapter “[Track Quick Controls](#)” on [page 338](#).

---

# 實例說明, Q & A

---